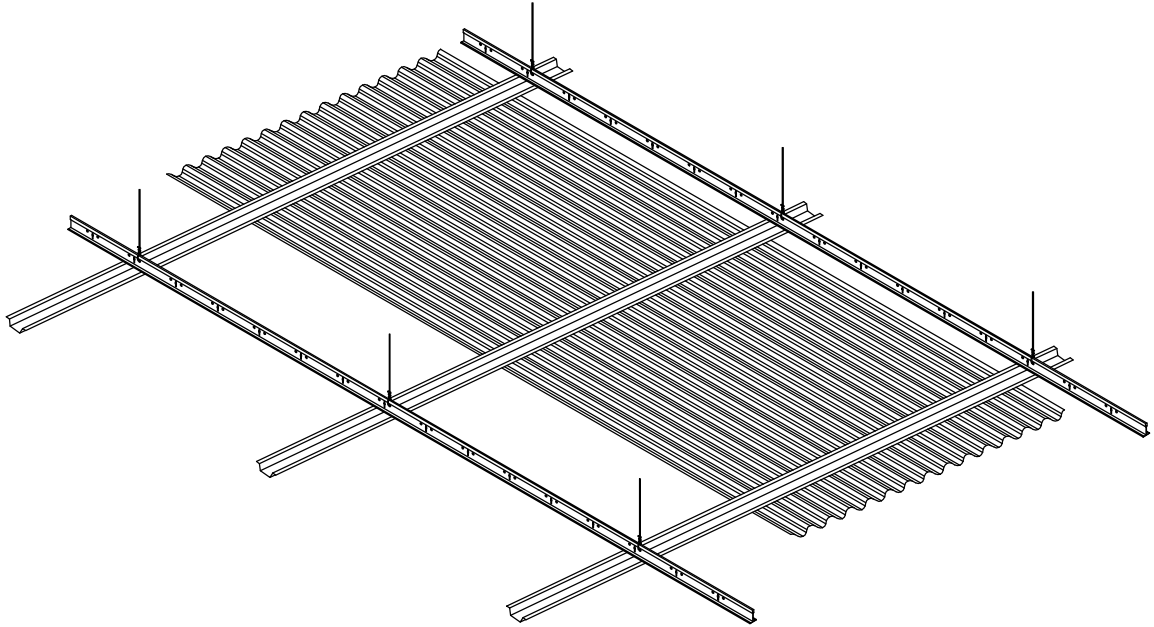


accent

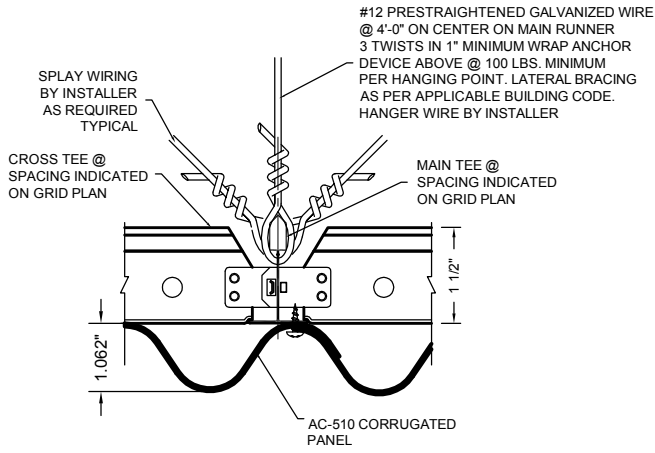
CEILING AND WALLS

A DIVISION OF ADAMS CAMPBELL COMPANY
ISO 9001: 2000 CERTIFIED

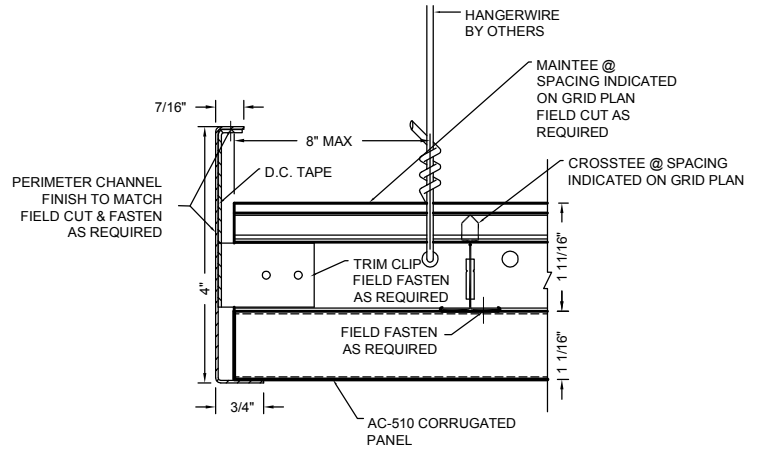
CORRUGATED DIRECT MOUNT CEILING SYSTEM (AC-510)



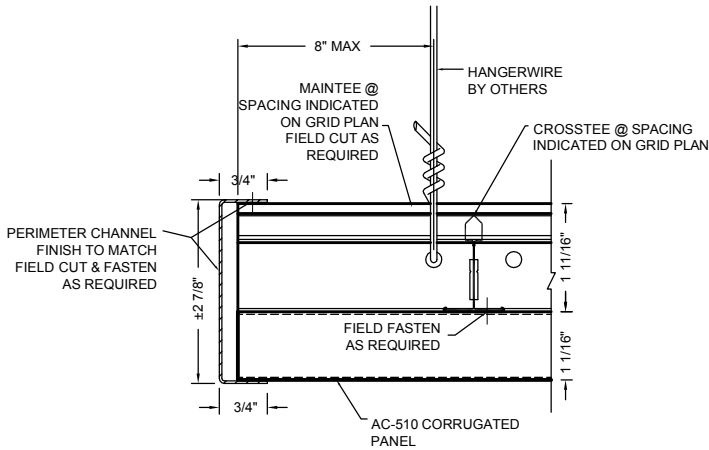
| | |
|--------------------------|--|
| Description: | Economical corrugated direct mount ceiling system, Perforated full bleed or Non-Perforated. Direct mount to tee bar or ridged backing. Panel are screwed to structure. Efficient and quick installation. |
| Application: | Ceiling provided for interior installation, vaulted or curved design available. (Exterior system available, extruded aluminum grid as required and exterior finishes required.) |
| Material: | Panel available in aluminum, steel or stainless steel |
| Finishes: | Painted powder coat colors, brushed, bright, anodized, vinyl or custom finishes Reference Options tab for available finishes. |
| Standard Sizes: | Up to 10'-0" in length. |
| Fire Rating: | Class A |
| Acoustics: | NCR rating of .70 to .100 can be achieved by selecting correct perforation pattern and acoustical backing. |
| Perforation: | Reference Options Tab for Patterns, consult manufacturer for acoustical values |
| Recycled content: | Aluminum 60% · Steel 33% · Stainless Steel 69% |



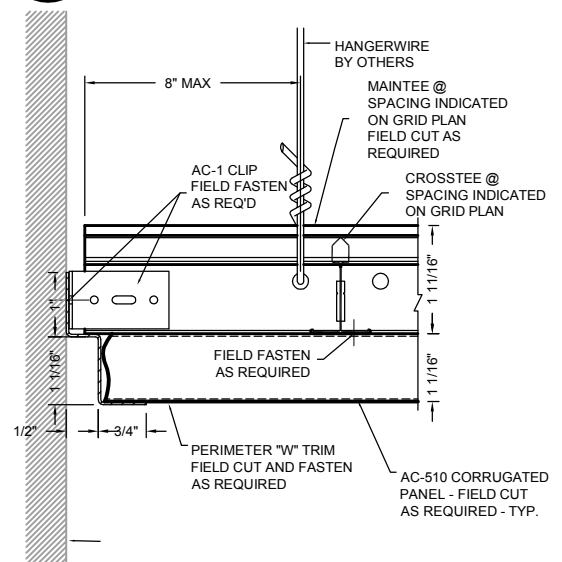
1 PANEL JOINT DETAIL
AC-510-PJ1



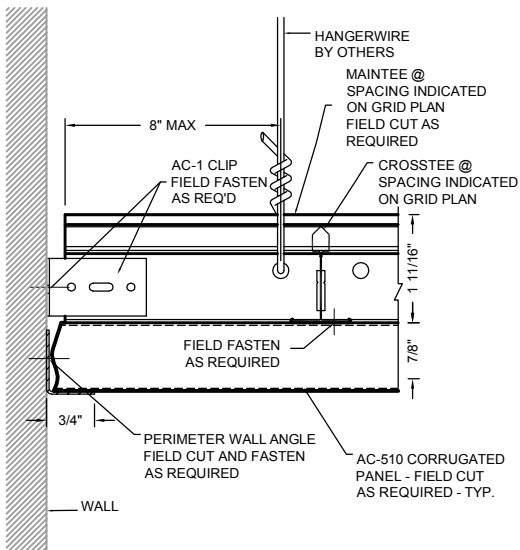
2 PERIMETER DETAIL
AC-510-P1



3 PERIMETER DETAIL
AC-510-P2



4 PERIMETER DETAIL
AC-510-PFC1



5 PERIMETER DETAIL
AC-510-PFC2