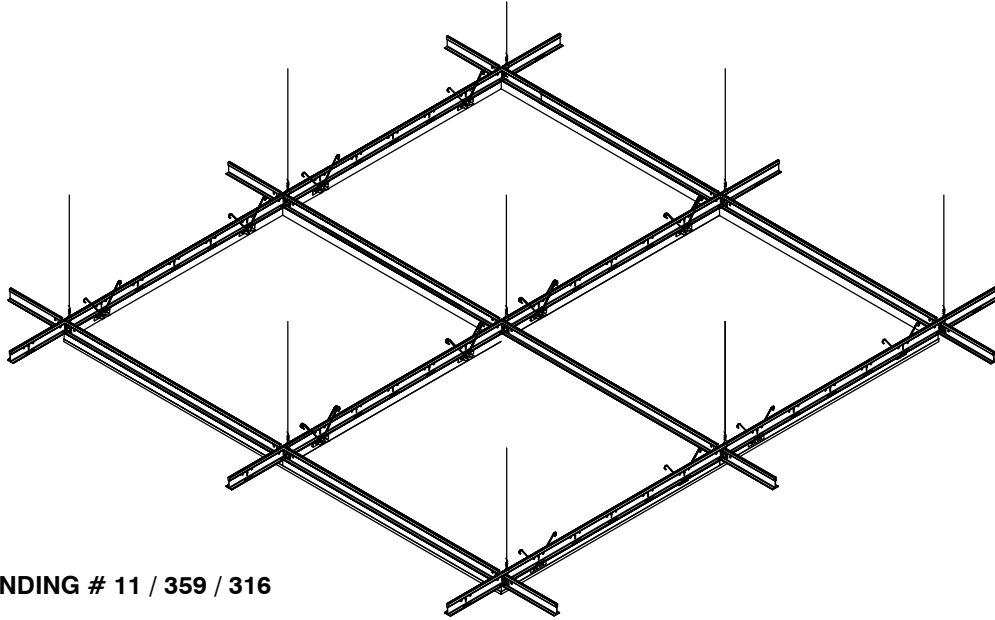


# accent<sup>®</sup>

## CEILING AND WALLS

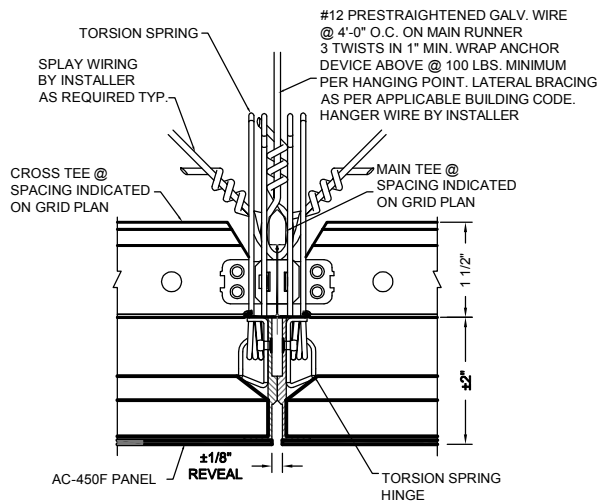
A DIVISION OF ADAMS CAMPBELL COMPANY  
ISO 9001: 2000 CERTIFIED

### ACCENT ADVANTAGE TORSION SPRING MOUNTED CEILING SYSTEM (AC-450)

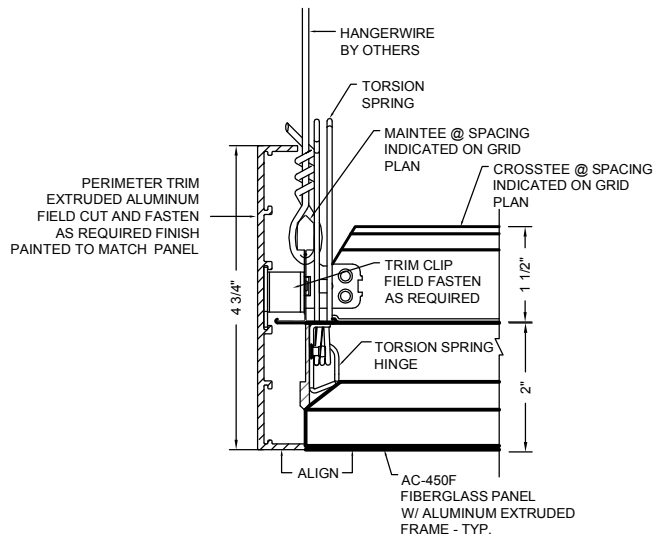


PATENT PENDING # 11 / 359 / 316

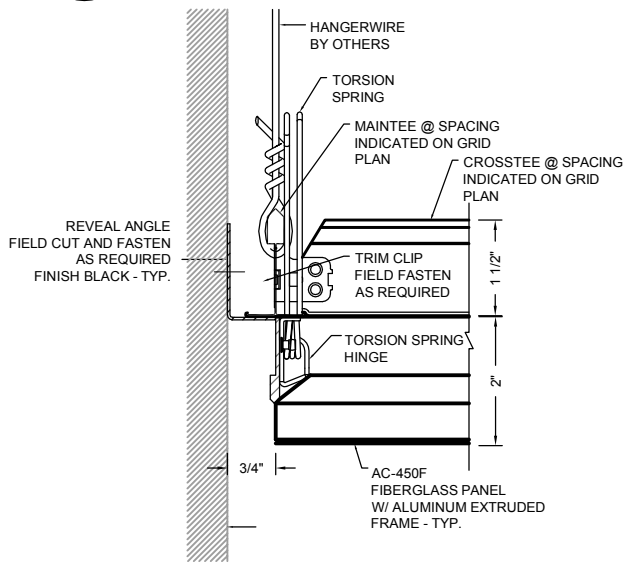
- Description:** Fiberglass panel system. Medium density fiberglass panel, extruded aluminum panel frame. Concealed torsion spring mounting system creates a clean monolithic appearance. A 1/8" reveal condition at all panel joints. Concealed heavy-duty tee bar grid system supports each panel. Each individual panel can be removed without disturbing adjacent panels.
- Application:** Ceiling provided for a flat interior installation. (Also available in a curved application)
- Material:** Medium density fiberglass.
- Finishes:** Standard white textured finish. Custom colors and non-textured finish is available.
- Standard Sizes:** 24" x 24", 30" x 30", 24" x 48", 36" x 36" and 48" x 48" standard. Some Custom sized and shaped panels also available.
- Fire Rating:** Class A
- Acoustics:** NCR rating of .90 to 1.00
- Recycled content:** Aluminum 60% · Steel 33% · Stainless Steel 69%



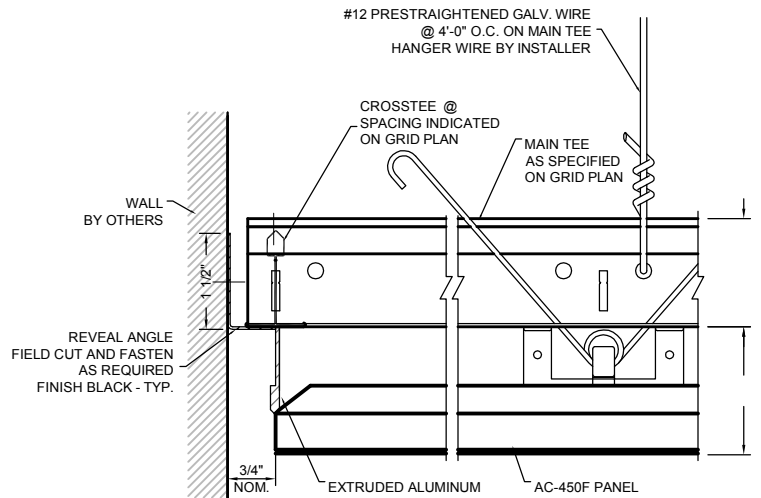
**1** PANEL JOINT DETAIL  
AC-450F-PJ1



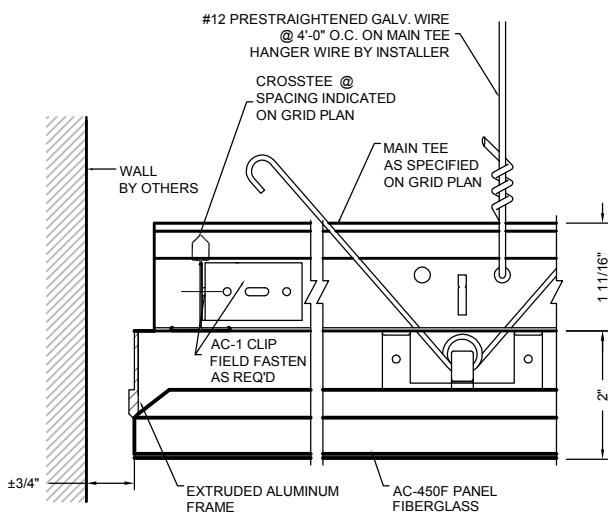
**2** PERIMETER DETAIL  
AC-450F-P1



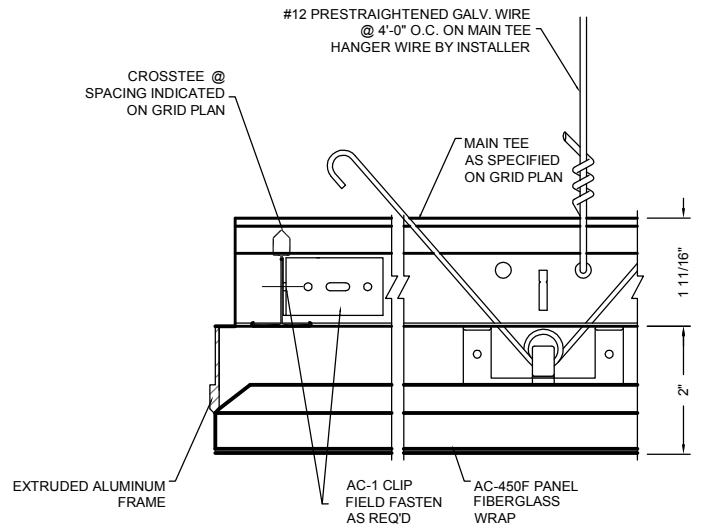
**3** PERIMETER DETAIL  
AC-450F-P2



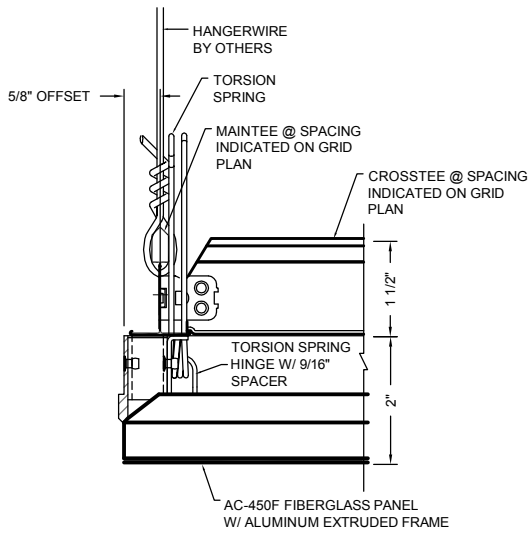
**4** PERIMETER DETAIL  
AC-450F-P3



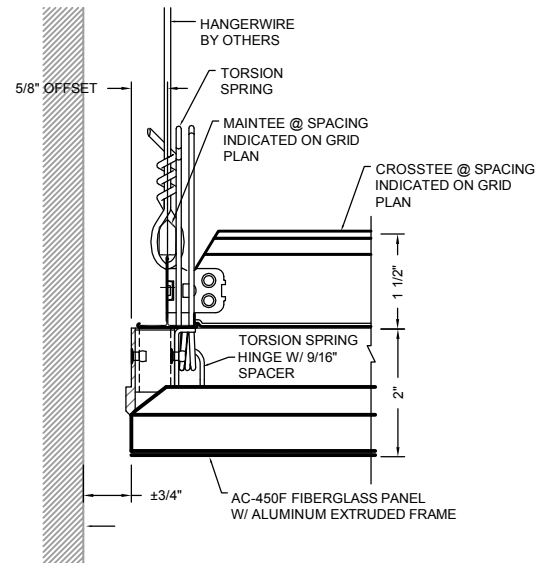
**5** PERIMETER DETAIL  
AC-450F-P4



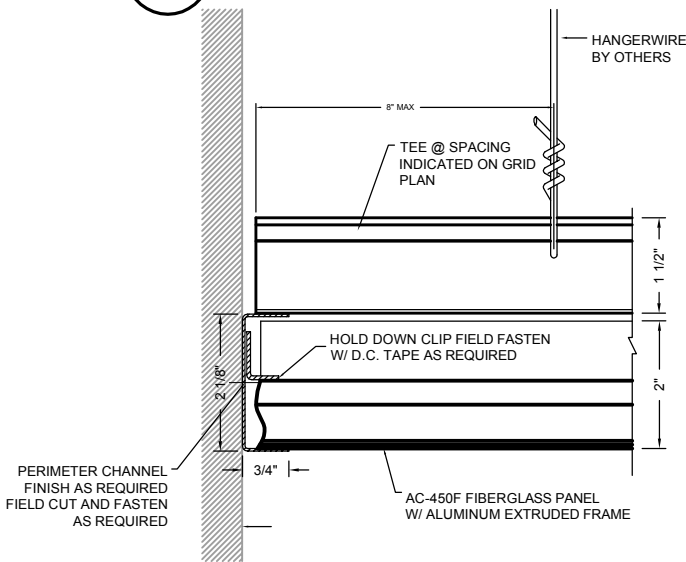
**6** PERIMETER DETAIL  
AC-450F-P5



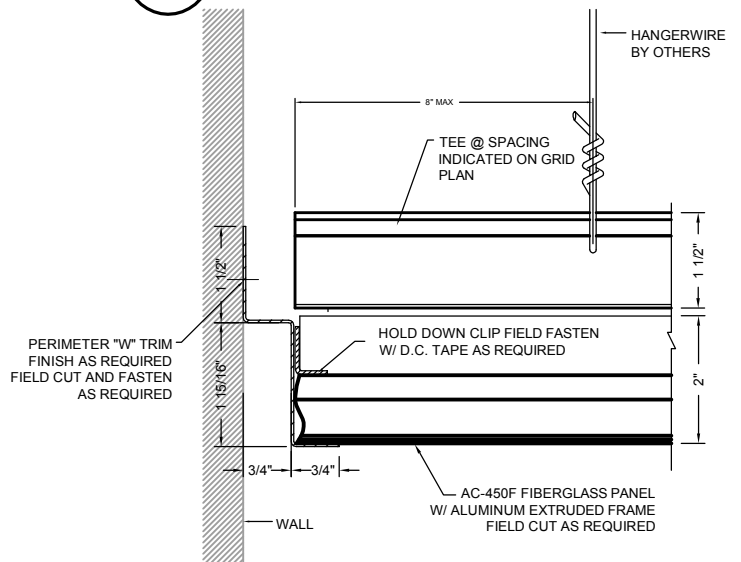
**1** PERIMETER DETAIL  
AC-450F-P6



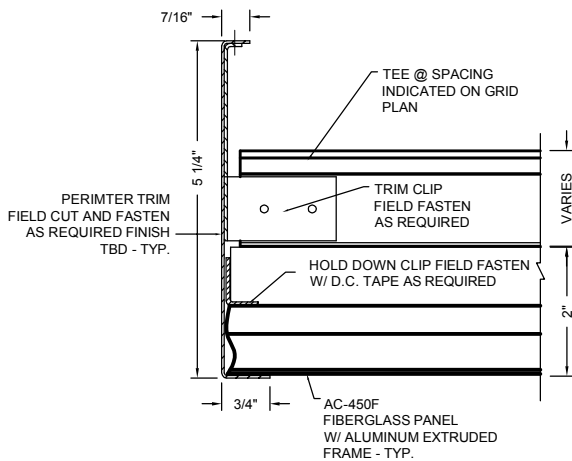
**2** PERIMETER DETAIL  
AC-450F-P7



**3** PERIMETER DETAIL  
AC-450F-PFC1



**4** PERIMETER DETAIL  
AC-450F-PFC2



**5** PERIMETER DETAIL  
AC-450F-PFC3