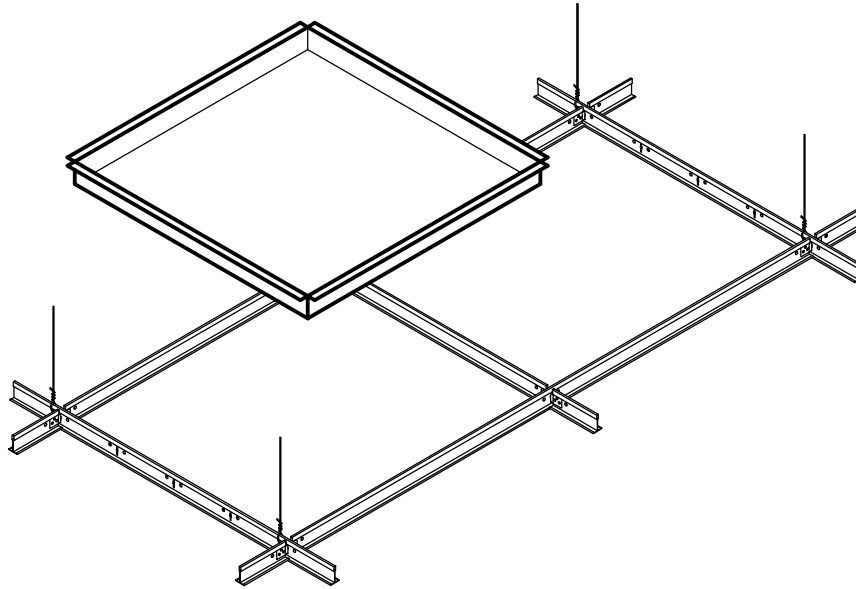


# accent

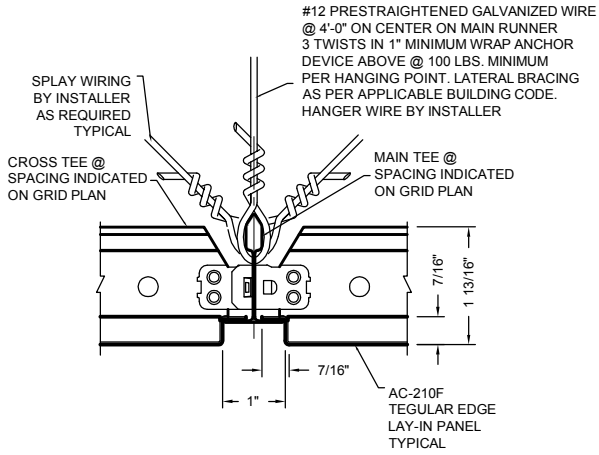
## CEILINGS AND WALLS

A DIVISION OF ADAMS CAMPBELL COMPANY  
ISO 9001: 2000 CERTIFIED

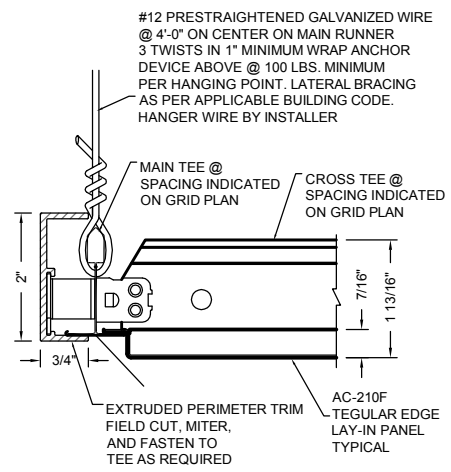
### LAY-IN FLAT, TEGULAR EDGED METAL CEILING SYSTEM (AC-210)



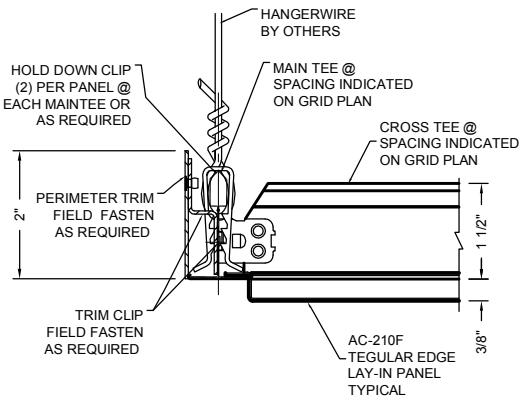
- Description:** Economical tegular edge lay-in ceiling system, Perforated or Non-Perforated. Exposed recessed tee grid system. Face of panel drops below face of grid. Available for 9/16" wide and 15/16" wide grid. When 9/16" fineline grid is used, panel face will flush out with face of fineline grid. Efficient and quick installation, Panel drops into ceiling grid.
- Application:** Ceiling provided for interior installation. (vaulted or radial design available)
- Material:** Panel available in aluminum, steel or stainless steel
- Finishes:** Painted powder coat colors, brushed, bright, anodized, vinyl or custom finishes  
Reference Options tab for available finishes.
- Standard Sizes:** 24" x 24", 24" x 48", 30" x 30" and 36" x 36" Custom sized panels also available.
- Fire Rating:** Class A
- Acoustics:** NCR rating of .70 to .100 can be achieved by selecting correct perforation pattern and acoustical backing.
- Perforation:** Reference Options Tab for Patterns, consult manufacturer for acoustical values
- Recycled content:** Aluminum 60% · Steel 33% · Stainless Steel 69%



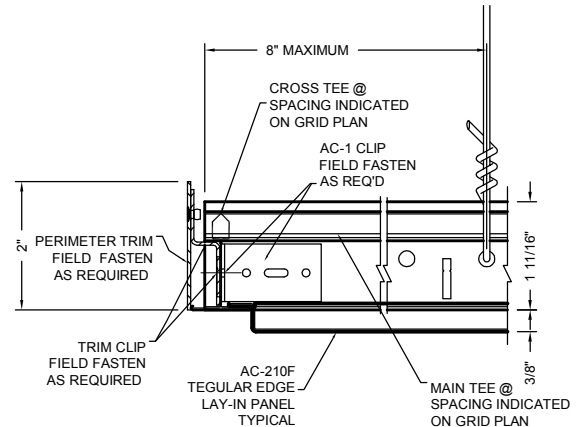
**1** PANEL JOINT DETAIL  
AC-210-PJ1



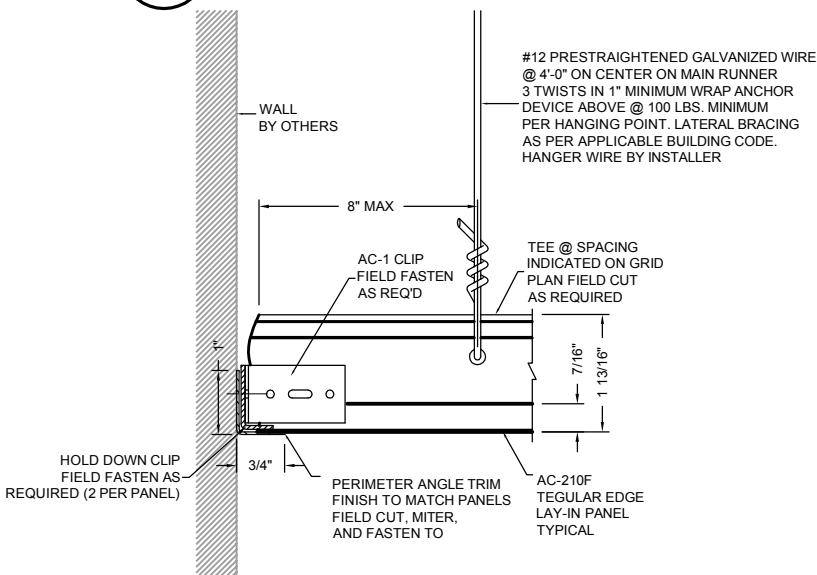
**2** PERIMETER DETAIL  
AC-210-P1



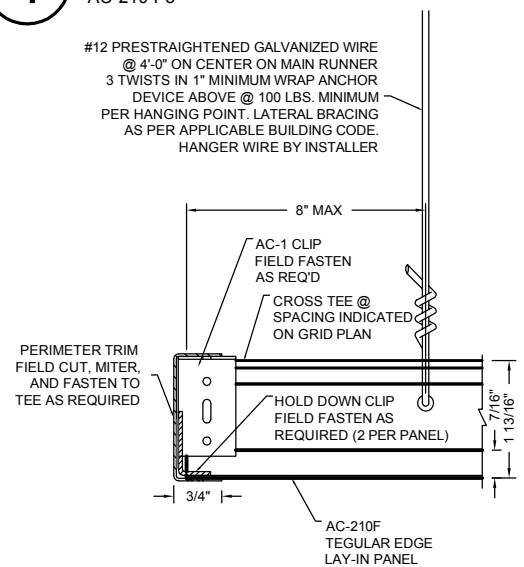
**3** PERIMETER DETAIL  
AC-210-P2



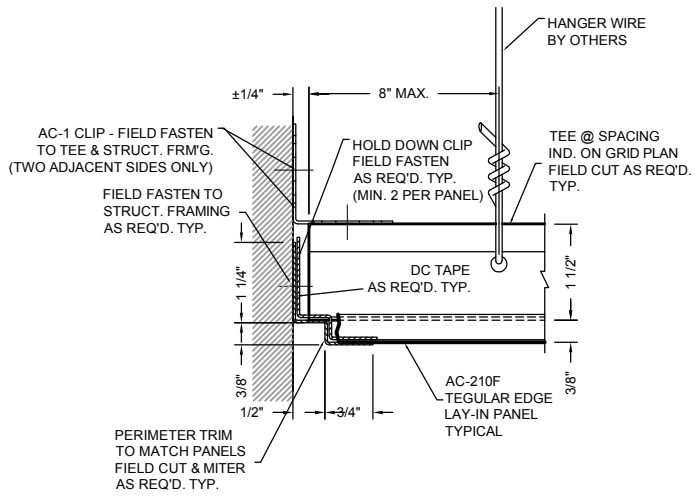
**4** PERIMETER DETAIL  
AC-210-P3



**5** PERIMETER DETAIL  
AC-210-PFC1



**6** PERIMETER DETAIL  
AC-210-PFC2



**1** PERIMETER DETAIL

---

AC-210-PFC3